

dadand.com

A BLOG ABOUT DIY,
HOW-TO, FAMILY + GADGETS

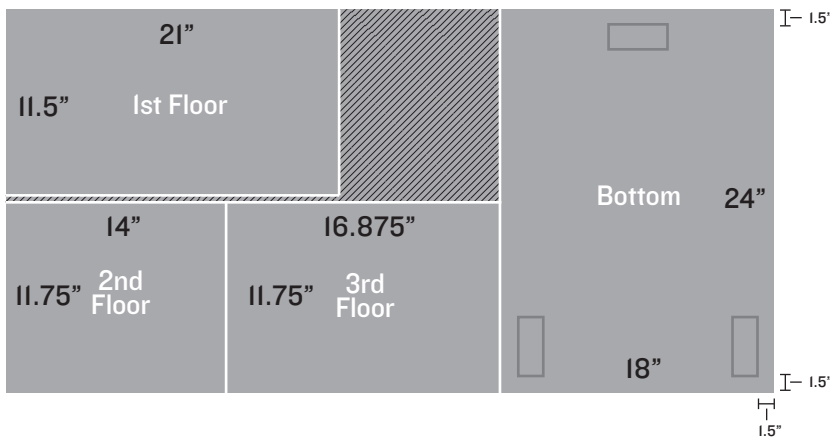
TITLE

KITTY CONDO PLANS

Brought to you by dadand.com, loved by at least two cats.

These drawings are not to scale. We have a hard enough time writing, let alone drawing up some stuff to scale.

/// LET'S CUT SOME WOOD FIRST - 2' x 4' x .75" PANEL: MDF, PLY or PARTICLE BOARD



These are for the platforms, where your cat(s) will sleep, scratch and lick themselves.

CUT LIST:

I LIKE TO MARK ALL OF THE CUT LINES AND PLACEMENT FOR 2X4 UPRIGHTS. THEN ASSEMBLE THE WHOLE THING PRIOR TO UPHOLSTERY. THEN, YOU CAN SEE IF YOU NEED TO ADJUST ANYTHING. PRE-DRILL FOR SCREWS.



USE 2" SCREWS

/// USE 2"x4"s FOR THE VERTICAL SUPPORTS

12" - FRONT SUPPORT

24" - SHORT SIDE SUPPORT

48" - TALL SIDE SUPPORT

All supports can be cut from one 2"x4"x8'. Or if you have a bunch of scraps left over from other projects, like I did, then use 'em. You shouldn't use pressure-treated wood though. Chemicals probably aren't good for cats.

IF YOU GOT A JIG THEN MAKE SOME

POCKET HOLES WERE DRILLED TO FASTEN THE FIRST- AND SECOND-FLOORS FROM UNDERNEATH. YOU CAN FIND A POCKET HOLE JIG AT MOST HOME CENTERS FOR ABOUT \$20. IF YOU MAKE STUFF OUT OF WOOD, YOU SHOULD HAVE ONE OF THESE.

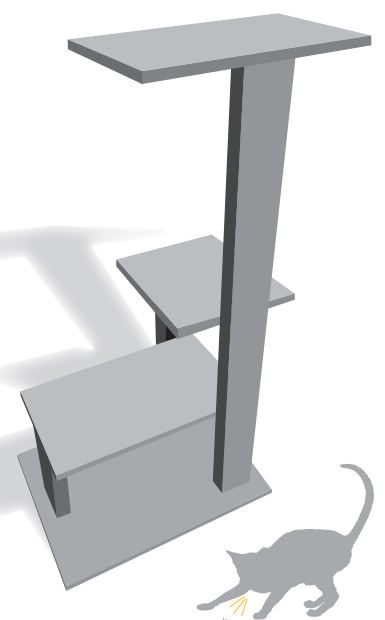
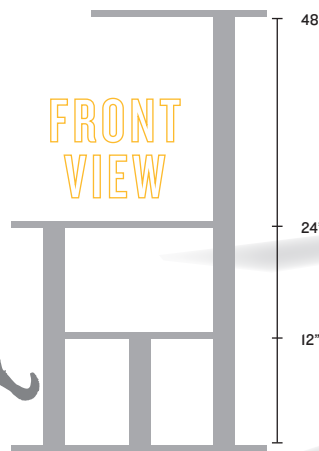


LOOK! THE DOG CAN'T GET YOU WAY UP HERE



WE THINK YOU CAN BUILD THIS IN ABOUT 2 HRS. UNLESS THE DAMN CAT KEEPS RUBBING UP AGAINST YOUR LEG WHILE YOU WORK.

FRONT VIEW



COVER IT ALL WITH CARPET:

I went to the home center and bought two feet off one of those big rolls (about 12' wide), and went for the cheapest carpet they had—that would still match our home. My wife wouldn't let me use the green patio stuff.

TOTAL WAS ABOUT:

\$25

ONLY! @DadAndBlog <https://www.facebook.com/Dadandblog>
dadand.com



LIKE US NOW

THEY'LL SHOW THEIR APPRECIATION BY COUGHING UP HAIRBALLS